

# MONTHLY MEMBERSHIP PROGRESS REPORT

District 3232B2

Results as of: 5/31/2024

GMT:

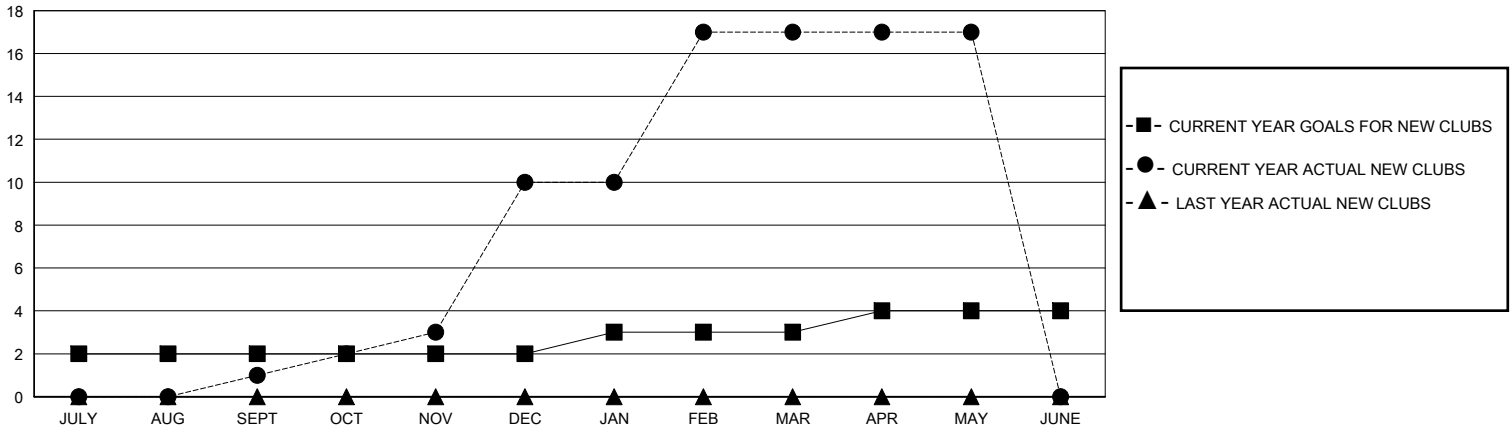
LOCATION INDIA

GMT CA

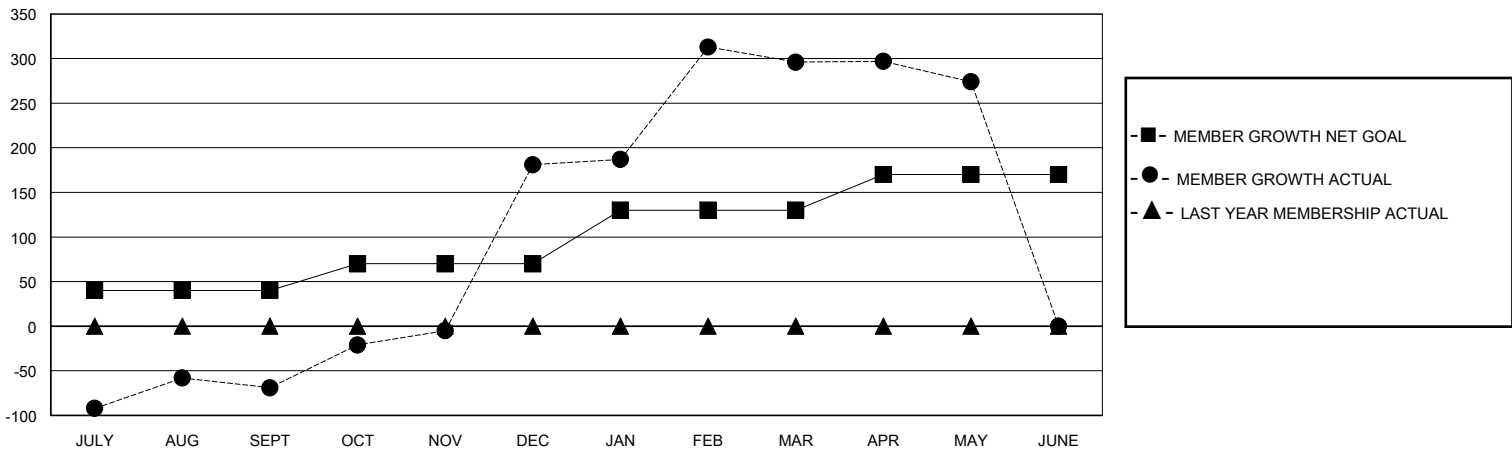
Clubs			
RESULTS FOR 2023-2024			
QUARTER	NEW CLUB GOAL	NEW CLUBS	DROPPED CLUBS
JULY/AUG/SEPT	2	1	3
OCT/NOV/DEC	0	9	6
JAN/FEB/MAR	1	7	0
APR/MAY/JUNE	1	0	0

Members			
RESULTS FOR 2023-2024			
QUARTER	MEMBER GROWTH NET GOAL	MEMBER GROWTH ACTUAL	DROPPED MEMBERS ACTUAL (including transfers)
JULY/AUG/SEPT	40	157	183
OCT/NOV/DEC	30	533	266
JAN/FEB/MAR	60	161	44
APR/MAY/JUNE	40	17	34

GOALS AND ACTUAL NEW CLUBS CUMULATIVE



GOALS AND ACTUAL MEMBERS CUMULATIVE



DROPPED CLUBS: 9	51 CLUBS OF 76 ADDED 1 OR MORE NEW MEMBERS	<u>GENDER DISTRIBUTION</u>	
<u>DROPPED MEMBERS</u>		MALE	1,410 (54.91%)
DECEASED	14	FEMALE	1,157 (45.05%)
CLUB CANCELLED	154	TOTAL FAMILY UNIT MEMBERS	
OTHER	355	2,292	
<b>TOTAL</b>	<b>523</b>	FAMILY MEMBERS PAYING HALF DUES	
		1,653	

[CLICK HERE FOR CUMULATIVE MEMBERSHIP DATA](#)